

SAUK RAPIDS WEST WAREHOUSE

1011 13th Ave. N. | Sauk Rapids, MN 56379



AVAILABLE IMMEDIATELY

FOR LEASE | 6,000 - 12,000 SF
\$6.50 PSF | 12,000 +/- SF
CAM & Taxes \$1.50 PSF



PROPERTY DESCRIPTION

6,000 to 12,000 total square feet of industrial space available. Landlord willing to split into two 6,000 square foot bays. Outstanding location near US HWY 10 in Sauk Rapids Industrial Park. Space features loading dock, grade level door and 20-24' clear height.

SPACE FEATURES

- US HWY 10 Access
- Loading Dock
- Grade Level Door
- 20-24' Clear Height
- Heated
- Building in Excellent Condition
- +/-12,000 Total SF



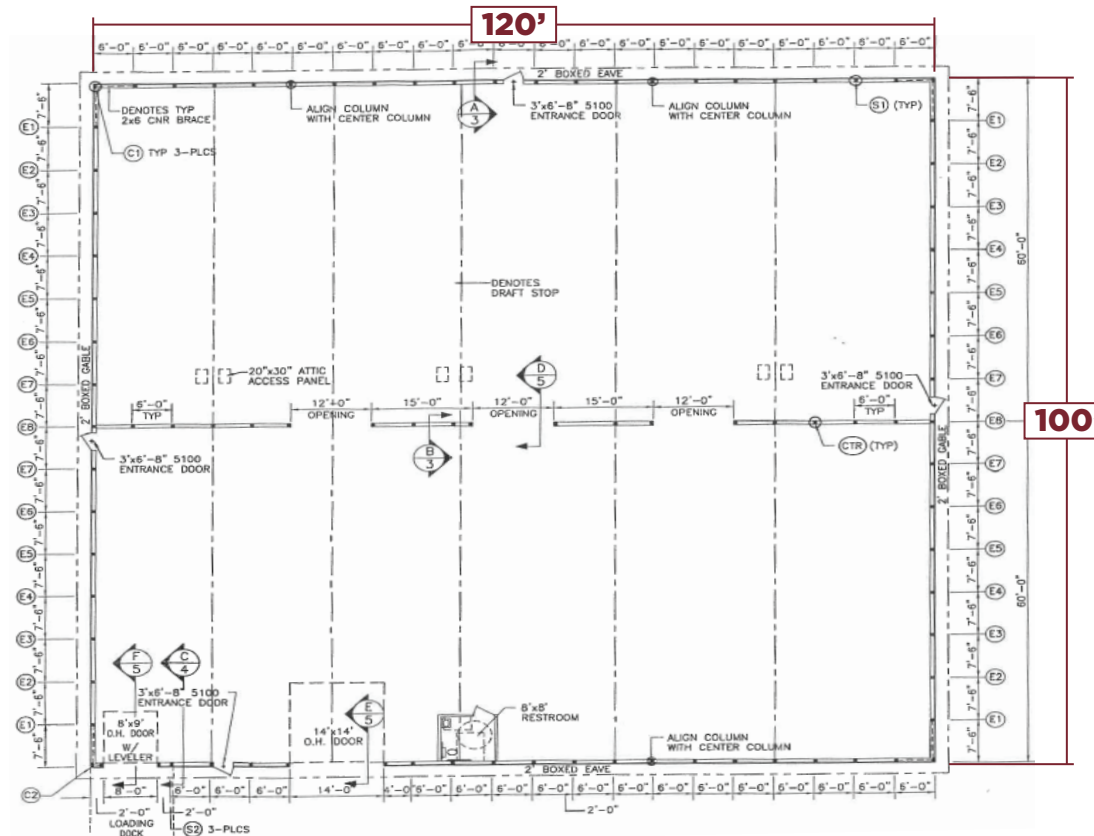


LOCATION MAP

Sauk Rapids West Warehouse is located in Sauk Rapids Industrial Park with outstanding access to US HWY 10.



FLOOR PLAN



CONTACT:
320.252.0404
RICEPROPERTIES.COM

FOR LEASE
\$6.50 PSF
CAM & Taxes \$1.50 PSF

BEN COPPERTHITE
Rice Real Estate Broker
612.242.4869
ben.copperthite@riceproperties.com

We obtained the information above from sources we believe to be reliable. However, we do not claim to make a guarantee, warranty or representation about such information. It is submitted subject to the possibility of errors, omissions, change of price, rental or other conditions, prior sale, lease or financing, or withdrawal without notice. You and your tax and legal advisors should conduct your own investigation of the property and transaction.